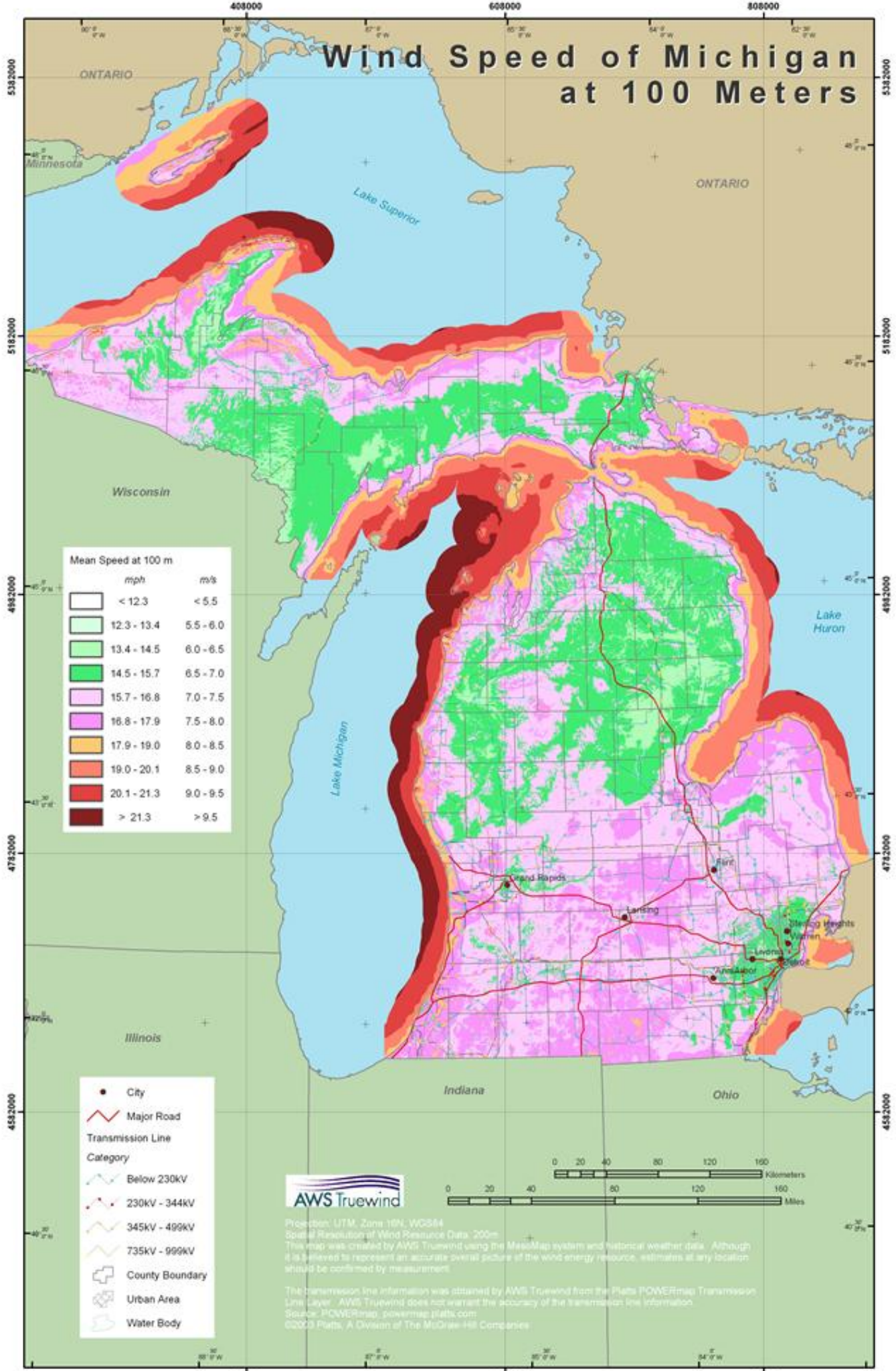


# Wind Speed of Michigan at 100 Meters



Mean Speed at 100 m

mph	m/s
< 12.3	< 5.5
12.3 - 13.4	5.5 - 6.0
13.4 - 14.5	6.0 - 6.5
14.5 - 15.7	6.5 - 7.0
15.7 - 16.8	7.0 - 7.5
16.8 - 17.9	7.5 - 8.0
17.9 - 19.0	8.0 - 8.5
19.0 - 20.1	8.5 - 9.0
20.1 - 21.3	9.0 - 9.5
> 21.3	> 9.5

- City
- Major Road
- Transmission Line
- Category
- Below 230kV
- 230kV - 344kV
- 345kV - 499kV
- 735kV - 999kV
- County Boundary
- Urban Area
- Water Body



Projection: UTM, Zone 18N, WGS84  
 Spatial Resolution of Wind Resource Data: 200m  
 This map was created by AWS Truewind using the MapInfo system and historical weather data. Although it is believed to represent an accurate overall picture of the wind energy resource, estimates at any location should be confirmed by measurement.

The transmission line information was obtained by AWS Truewind from the Platts POWERmap Transmission Line Layer. AWS Truewind does not warrant the accuracy of the transmission line information.  
 Source: POWERmap, powermap.platts.com  
 ©2003 Platts, A Division of The McGraw-Hill Companies